

MONTHLY MEMBERSHIP PROGRESS REPORT

LOCATION GEORGIA

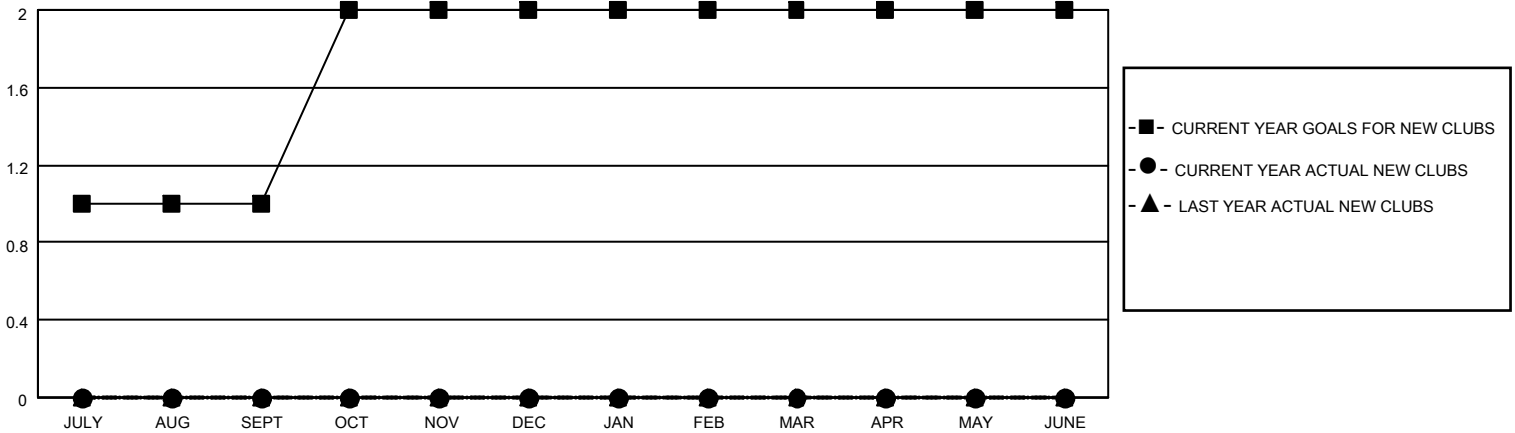
District 18 L

Results as of: 4/30/2023

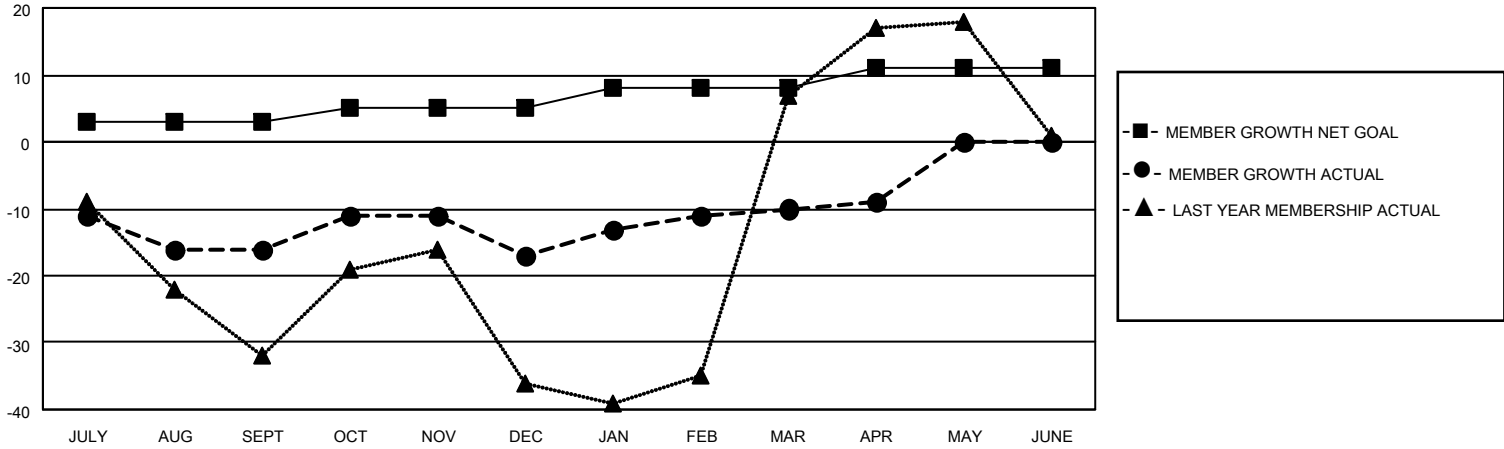
Clubs			
RESULTS FOR 2022-2023			
QUARTER	NEW CLUB GOAL	NEW CLUBS	DROPPED CLUBS
JULY/AUG/SEPT	1	0	0
OCT/NOV/DEC	1	0	0
JAN/FEB/MAR	0	0	0
APR/MAY/JUNE	0	0	0

Members			
RESULTS FOR 2022-2023			
QUARTER	MEMBER GROWTH NET GOAL	MEMBER GROWTH ACTUAL	DROPPED MEMBERS ACTUAL (including transfers)
JULY/AUG/SEPT	3	13	25
OCT/NOV/DEC	2	32	31
JAN/FEB/MAR	3	33	25
APR/MAY/JUNE	3	11	10

GOALS AND ACTUAL NEW CLUBS CUMULATIVE



GOALS AND ACTUAL MEMBERS CUMULATIVE



DROPPED CLUBS: 0	
DROPPED MEMBERS	
DECEASED	10
CLUB CANCELLED	0
OTHER	81
TOTAL	91

21 CLUBS OF 42 ADDED 1 OR MORE NEW MEMBERS

[CLICK HERE FOR CUMULATIVE MEMBERSHIP DATA](#)

<u>GENDER DISTRIBUTION</u>	
MALE	744 (62.89%)
FEMALE	438 (37.02%)
NON BINARY	0 (0.00%)
PREFER NOT TO ANSWER	1 (0.08%)
TOTAL FAMILY UNIT MEMBERS	
	201
FAMILY MEMBERS PAYING HALF DUES	
	107